

# NEWSLETTER

April 2025



## Apply now for Clay Fest 2025

Now accepting applications online for all booths and gallery only. Apply by May 25, 2025, to be eligible for the booth pick meeting on June 3, 2025.

Visit our Local Clay website to submit an application!

For more information or questions about the show please get in touch with Show Chair, Laura Wikane,

[terrapi potteryeugene@gmail.com](mailto:terrapi potteryeugene@gmail.com) or contact us on the Local Clay Website <http://www.clayfesteugene.com>

## Clay Fest Bookmarks are Ready!

Promote the show by handing out Bookmarks. Clay Fest bookmarks are out of the press and can be picked up at Wildling Collaborative Arts, Clay Space, or our next Local Clay Meeting on May 17, 2025 from 2-4pm. Pick up a stack and hand them out at all your summer shows!



## Clay Fest Steering Committee Chair Openings 2025

Sale Tags Co-Chair- Work with co-chair to manage the Sales Tags Room, oversee the checking of barcode labels with Square Terminal Reports. Attention to detail and computer skills required; knowledge of Square is helpful but not necessary. Detailed instruction of job provided plus training by co-chair. This is a 1-point position.

Please contact the Clay Fest Show Chair for more information:

Laura Wikane,  
[terrapi potteryeugene@gmail.com](mailto:terrapi potteryeugene@gmail.com)

“Firing pottery is like lighting a fire in your heart.”  
— Yeon Somin,

## PRESIDENT’S MESSAGE:

As Eugene's spring sunshine begins to warm our studios, our ceramic community is blooming with activity! The longer, brighter days are perfect for throwing open the windows and getting our hands in the clay. The Saturday Market, Whiteaker Community Market, and others are getting into full swing, offering wonderful opportunities to connect with the public and share our ceramic creations. This season of renewal brings fresh inspiration and countless opportunities to connect!

Local Clay is delighted to share that as of April 17th, Local Clay has grown to 112 members, with more expected as Clay Fest applications come in. We need only 22 more members to meet the same membership level as last year. Encourage your friends and colleagues to renew!

Our Studio Tours program has been a wonderful success this season. I'd like to extend a heartfelt thank you to Club Mud and the UO Craft Center for opening their doors and sharing their expertise with our members. Looking ahead, we're excited to announce our next tour at Clay Space in May—an opportunity you won't want to miss!

Mark your calendars for our upcoming General Members Meeting on May 18th from 11am-1pm at the McNail-Riley House. You'll find more details about this important gathering later in the newsletter. We're going to have another potluck and an artist talk offered by Hosanna White of Whitesnake Arts.

I'm particularly proud of our Clay in Education initiatives from this winter and spring. Through this program, we've sponsored three Local Clay members' community engagement projects. Special recognition goes to Abbie Stillie, Amy Hess, and Mariah Williams for their dedication in reaching over 35 students and sharing the joy of clay with our community's youth.

The big news this season is Clay Fest 2025! Applications are now open online for all booths and gallery-only participants. Remember to apply by May 25th to be eligible for the booth pick meeting on June 3rd. We're especially enthused about Clay Fest expanding to a larger space within the Lane Events Center, allowing us to welcome even more clay artists while remaining in our familiar location. Special thank you goes out to Laura Wikane and the Clay Fest Steering Committee Crew for all their efforts and hard work. Clayfest wouldn't happen without your dedication!

I look forward to seeing you all at our upcoming events and celebrating our vibrant clay community together.

Warmly,  
Kate Thornhill  
President, Local Clay





"Out of the fire comes firmness, through stress we pass to strength". Charles F. Binns

# LOCAL CLAY GENERAL MEMBERS MEETING!



When: May 18th, 2025, at 11:00 AM-1:00 PM

Where: McNail Riley House - 601 W. 13th Ave. Eugene, OR. 97402

Parking: Please park at the Lane Events Center across the street. Do not park at Lincoln School!

## What to Expect

### UPDATES FROM THE LOCAL CLAY BOARD

ARTIST TALK: Hosanna White of Whitesnake Arts

Instagram: [whitesnakearts](https://www.instagram.com/whitesnakearts)

Hosanna White lives in the foothills of the Willamette Valley, a geologically rich landscape that has inspired her studio work Whitesnake Arts. As an educator and artist, she blends bio-regional history and land stewardship into her earth pigment arts practice and place based pottery. She is dedicated to divesting from commercial mining and manufacturing, investing instead in learning how to use what she can gather. This exploration has sparked a passion for clay chemistry and deepened her relationship with the landscape around her.

Hosanna will be presenting on her use of foraged materials in her ceramics practice over the last nine years.

### POTLUCK!

We're combining business with pleasure by hosting a community potluck during the meeting. Please bring a dish or beverages to share with fellow members. While we'll have plates and utensils available, we encourage everyone to bring their own place settings (plate, cups, utensils) to help reduce our environmental impact. The facility includes a kitchen for cleanup.

Additionally, we're organizing a tool swap! If you have any pottery tools you'd like to exchange, bring them along. This is a wonderful opportunity to refresh your toolkit while connecting with other members.





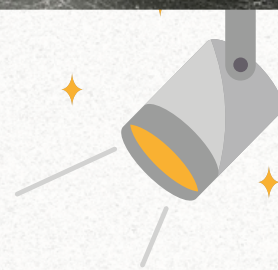


## ARTIST SPOTLIGHT: MATTY MAXWELL

[www.earthspunpottery.com](http://www.earthspunpottery.com)

Instagram: [@earthspun\\_pottery](https://www.instagram.com/earthspun_pottery)

Facebook: <https://www.facebook.com/earthspunpottery>



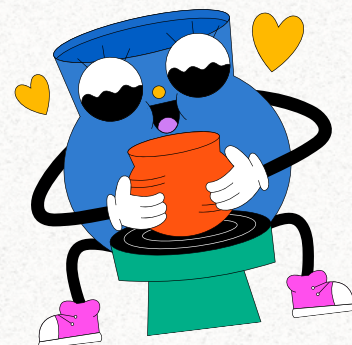
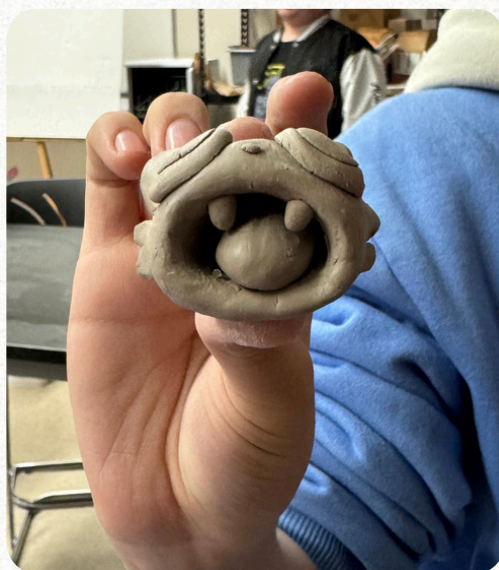
Tell us about yourself - I started doing pottery in 2016 and quickly fell in love with it. However, love does not mean it came easily for me. In fact, I repeated the same beginning pottery class many, many times! But I discovered that every time I would work with clay, I felt more grounded, more calm, focused, and so much happier. In 2020, I closed my nature-based preschool and not long after, turned my classroom into a pottery studio. Now I work with a variety of mid-range clays, but my favorite is a very translucent porcelain. I've had a booth at Clay Fest and The Saturday Market's Holiday Market for the last two years, and this year I hope to add another market and expand my online sales.

- How long have you been a member of Local Clay? 2 years
- What is your favorite type of piece to make? Porcelain luminaries and lamps
- Where do you make your pottery or ceramic art? Home studio
- Tell us about your favorite tool or glaze to use? Diamond Core carving tools are my favorite! I honestly love to leave my porcelain raw and sand it until it's buttery smooth. This allows the most light to pass through. However, I love making functional pots with many different styles and glazes.
- Where do you draw inspiration for your work from? I get inspiration from the beach, the mountains, the forest...wherever I am, I take note of the details and the beauty of nature

What's the best pottery tip someone gave you? Set up an ergonomic space to work, and don't stay in the same position for too long. Take tiny breaks, get up from the wheel, walk around, stretch, drink water, and then get back to work.







## CLAY IN EDUCATION

Through Clay in Education, we strive to convey the love of clay to students of all ages. Local Clay currently has three sponsored artists in the community. They are teaching clay through demonstrations, workshops, and projects in schools. These artists are funded through Local Clay and predominantly through the Clay in Education booth at Clayfest; a booth where each seller is asked to donate a piece of pottery to aid Clay in the Ed fund. We will be around at Clayfest, asking for the donations to fund inspiration and spread the love to the next generation of clay slingers.

In March, Abbie Stillie completed a middle school workshop, creating small hand-built creations. In February, in Junction City, Mariah Williams taught wheel thrown pottery to high school students and is hoping to schedule a few sessions this Spring. And currently Amy Hess is creating pinch pot monsters with Ridgeline's lower elementary students first through third grade.

Clay in Education is building a "clay wagon" which contains materials designed to support approximately 30 students and is available for use in the program. We look forward to more opportunities in the community as we raise more funds, please reach out to Amy Hess, Clay in Education chair for opportunities and or donations.





## STUDIOS / COMMUNITY FIRINGS

### Wildling Collaborative Arts

<http://www.wildlingcollaborativearts.com>

Come check out the new Wildling Clay and Art Supply! We have been hard at work at Wildling, trying to fill the gap that was left when Georgie's closed and make sure all our local artists have access to clay and supplies locally. We want to thank everyone who has supported and encouraged us during this huge undertaking! We are excited to say that we now carry Laguna, Georgies, Speedball, Kemper, Mud Tools, and are your new local Skutt Distributors! We keep a variety of low-fire, mid-range, and high-fire clay bodies in stock as well as a variety of glazes, underglazes, tools, and mason stains, and will be adding more as we grow. We can do special orders for quantities large and small, and offer discounts on clay orders over 1,000 lbs.

#### Open Hours

Wednesday 10:30-5:30

Thursday 10:30-5:30

Friday 10:30-5:30

Sunday 10:00-4:00

#### Clay Space Studio Hours

<http://www.clayspaceeugene.com>

541.653.8089

#### Open Hours

Monday 10am - 6pm

Tuesday 10am - 6pm

Wednesday 10am - 6:30pm

Thursday 10am - 9pm

Friday 10am - 5pm

Saturday 11am - 5pm

Sunday Closed



*Now Open!*

**Wildling**  
Collaborative Arts

**Clay & Art Supply**

*\*Laguna \*Georgies \*Speedball  
\*Skutt \*Royal Brush*

OPEN WEDNESDAY- FRIDAY 10:30AM-5:30PM  
& SUNDAY 10AM-4PM

**250 TAYLOR ST. EUGENE, OR**

### Community Firings offered by Angela Pfaffenberger in South Harlow

We offer community firings in Skutt 1027. Cost starts at \$8 for a full shelf; or \$40 for the whole kiln. We fire at cone 04 and cone 6, about once a week. We are located near Trader Joe in South Harlow. Please contact Angela per text or email if you have questions or would like to join.

Ph: 971 283 5282.

Email: [Angela.pf.phd@gmail.com](mailto:Angela.pf.phd@gmail.com)

# STUDIO TOURS



## Where to Next?

### Studio Tour: Clay Space

Local Clay members and friends are invited to join us for a studio tour at Clay Space on May 25 from 11am-1pm

RSVP by May 23rd: <https://forms.gle/oe1ZA4fLBAg7Zmfx6>

Clay Space has recently become a not-for-profit organization, with the mission of continuing to cultivate an inclusive artistic community where those of all skill levels can learn and grow together. Striving to foster a welcoming community by promoting creativity, connections, and lifelong learning.

Clay Space opened in April 2008 as a location for area ceramic artists to develop their skills in a professional and supportive environment. The space has evolved into a facility that offers learning and working opportunities for other disciplines as well. These include mosaics, tile, jewelry, mixed media, painting and drawing. The not-for-profit board of directors are working to build the community and continue the tradition of clay and artistic exploration.

- When: Sunday, May 25 from 11am-1pm
- Where: 222 Polk St, Eugene, OR 97402
- Who: Local Clay Members & Guests
- RSVP: Members attending should RSVP with the number in their group



# CLAY FEST

October 3-5, 2025, LEC Performance Hall

This year, planning for Clay Fest has been exciting and busy for the steering committee with the move this fall. We will be working on addressing all the changes needed to make our new location a success. Clay Fest 2025 will have 79 booths, a spacious gallery, two large sales areas, and lots of room for seating around the demo stage, and the kid's clay space has doubled. The 2025 Booth Layout Map will be available on the Website soon!

The application is live on the website and closes on May 25th, 2025. The Booth Pick meeting will be held in June and payment is due at the time you select your booth.

Please contact the Clay Fest Show Chair for more information:

Laura Wikane

[TerrapinPotteryEugene@gmail.com](mailto:TerrapinPotteryEugene@gmail.com)





April 2025

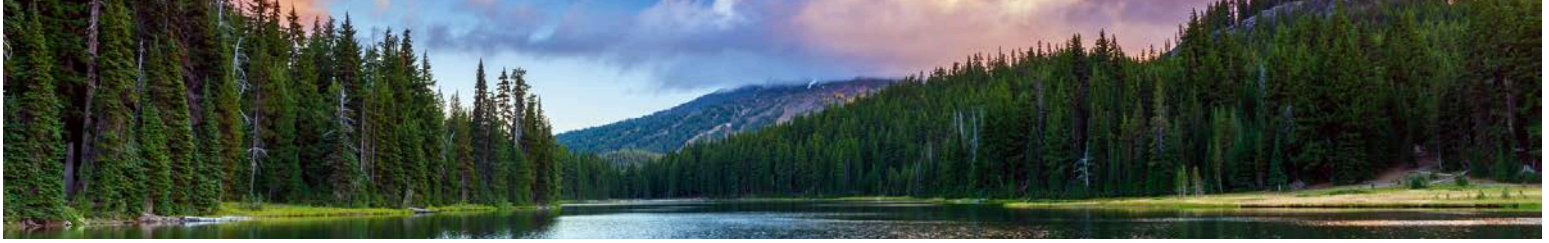
www.clayfestonline.com

FOR  
SALE

## Kiln for Sale - \$1200 (OR BEST OFFER)

Skutt 1027/240 - Contact John  
Loomis - jclthree@icloud.com





## Springtime Sparks: Inspiration in Bloom

There's something magical about spring in Oregon. The skies begin to stretch open, trees bloom with delicate whites and vibrant pinks, and the world seems to exhale into color. It's a season that reminds us of growth, renewal, and the joy of creating something new.

As ceramic artists and potters, this is our invitation to lean into that energy. Whether it's the twist of a dogwood branch, the gentle curve of tulip petals, or the earthy scent after a rain—spring offers endless textures, tones, and feelings to bring into the studio.

Now is the time to wedge that clay, open that sketchbook, and give yourself permission to explore. Maybe it's a new glaze you've been meaning to try, or a form that's been living in the back of your mind. Let the season guide you—play, experiment, and create something that brings you joy.

Spring doesn't ask for perfection. It just shows up—bold, bright, and alive.  
Let's do the same.

